

Spring 2023

# Jerusalem with The Holy City

Words and Music by  
**PAULA STEFANOVICH**  
Arranged by Russell Mauldin

Rhythmically, with excitement ♩ = 95

1	7
---	---

C C2 Csus C C2

4

**CHOIR**  
unison *mf*

John saw a cit - y that could not be hid,

unison

Csus C

7

*mf* **SOLO** (*with some freedom*)

John saw a cit - y, oh, yes he did!

**CHOIR** unison

oh, yes he did! John caught a

unison

7

C#F C

1	7
---	---

 This symbol refers to the corresponding track numbers on the ChoralTrax Accompaniment CD.  
The top number in each box refers to the Stereo Trax; the bottom number, to the Split Trax.

Performance time: 4:52

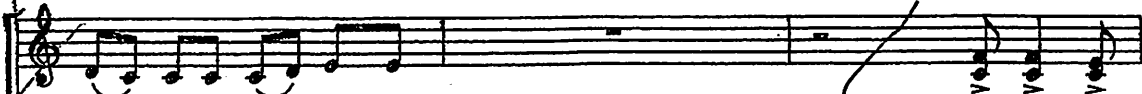
© 2002 Centergetic Music (ASCAP)  
All Rights Reserved. Used by Permission.

Copies For Rehearsal Only

10

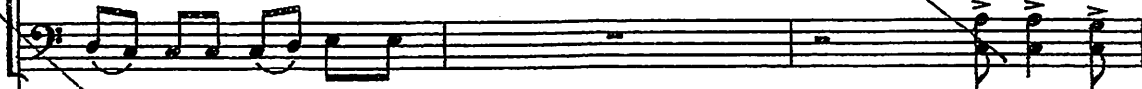


Tell me all a-bout it! Go right on!



glimpse of a gold - en throne.

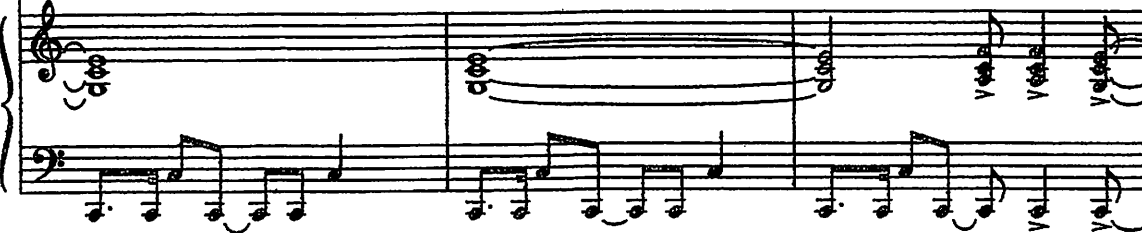
Go right on!



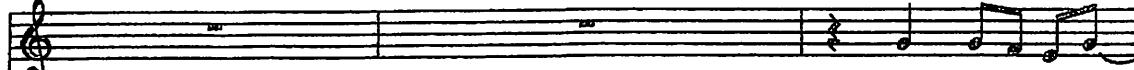
C<sup>F</sup>

C

10

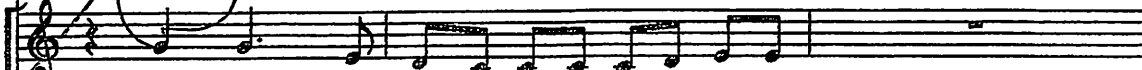


13



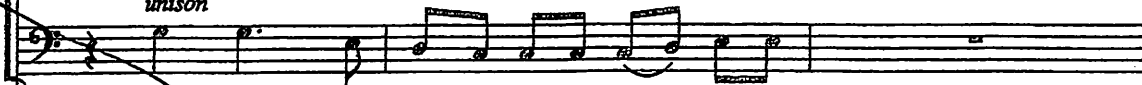
There's got to be more!

*unison*

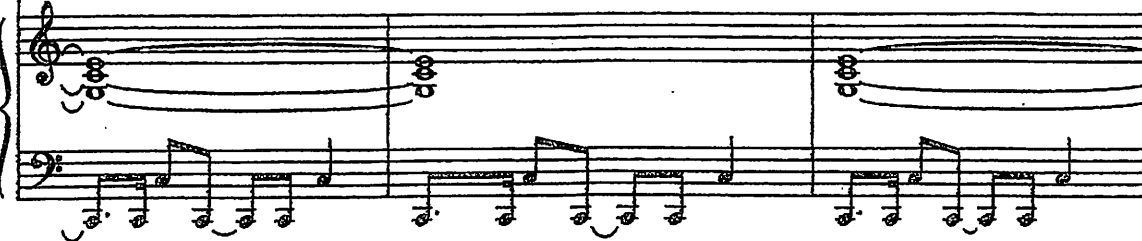


A - round the throne he saw the crys - tal sea.

*unison*



13



16

What will it be?

unison

What will it be? I want to go — to that cit - y he saw:

unison

C F C

19

2/8

New Je - ru - sa - lem!

New Je - ru - sa - lem!

Je - ru -

unison

Gsus G

22 (CHOIR)

sa-lem, I want to walk your streets that are

C F C

25

gold - en, and I want to run where the an-gels have trod...

Am G F

28

Je - ru - sa - lem,

Csus<sup>4</sup>/<sub>2</sub> C Gsus C

31

I want to rest on the banks of your riv - er,

Vocal line for measures 31-33, starting with a treble clef. The melody is: G4 (quarter), A4 (quarter), B4 (quarter), C5 (quarter), B4-A4 (beamed eighth notes), G4 (quarter), F4 (quarter), E4 (quarter), D4 (quarter).

F C Am G

Piano accompaniment for measures 31-33. The right hand plays chords: F (G-A-C), C (E-G-A), Am (A-C-E), G (B-D-F). The left hand plays a bass line: G3 (quarter), F3 (quarter), E3 (quarter), D3 (quarter), C3 (quarter), B2 (quarter), A2 (quarter), G2 (quarter).

34

unison

in that cit - y, cit - y of God. —

Vocal line for measures 34-36. Measure 34: G4 (quarter), A4 (quarter), B4 (quarter), C5 (quarter). Measure 35: B4-A4 (beamed eighth notes), G4 (quarter), F4 (quarter), E4 (quarter). Measure 36: D4 (quarter), C4 (quarter), B3 (quarter), A3 (quarter).

F F/C G/C C C2

Piano accompaniment for measures 34-36. Measure 34: F (G-A-C), F/C (C-G-A), G/C (C-G-A). Measure 35: C (E-G-A), C2 (C-E-G). Measure 36: C (E-G-A), C2 (C-E-G). Dynamics: *mf* is marked under the C and C2 chords in measure 36.

3/9

37

Empty vocal and piano staves for measures 37-39.

Csus C C2 Csus

Piano accompaniment for measures 37-39. Measure 37: Csus (C-E-G), C (E-G-A), C2 (C-E-G), Csus (C-E-G). The left hand continues with the bass line from the previous section.

40 *SOLO mf*

John saw the li-on lay down by the lamb.

*CHOIR mf*

I want to know ev-

40 C

43

John saw the day- but did not see night.

- 'ry-thing a-bout that Lamb!

43 C

46

He saw the saints

The Lamb of God,— well, must be the light!

*unison*

*f*

46

F C

49

wor-ship the great— I AM.

Cry-ing, "Wor-thy, wor - thy— is the Lamb!"

*mf unison*

*unison*

49

F C

52 4/10

I want to go to that cit - y he saw: New Je - ru - sa - lem! -

New Je - ru - sa - lem! -

Detailed description: This system contains the first two staves of music. The top staff is a vocal line starting at measure 52 with the lyrics 'I want to go to that cit - y he saw: New Je - ru - sa - lem! -'. The bottom staff is a piano accompaniment. A 4/10 time signature is indicated in a box at the top right. A large bracket on the right side of the piano accompaniment indicates a section that is repeated or has a specific performance instruction.

52

Detailed description: This system shows the piano accompaniment for measures 52-54. The right hand plays chords, and the left hand plays a rhythmic accompaniment of eighth notes.

55

Je - ru - sa - lem,

*unison*

Detailed description: This system contains the third and fourth staves of music. The top staff is a vocal line starting at measure 55 with the lyrics 'Je - ru - sa - lem,'. The bottom staff is a piano accompaniment. The word 'unison' is written below the piano staff. A large bracket on the left side of the piano accompaniment indicates a section that is repeated or has a specific performance instruction.

55 Gsus G C

Detailed description: This system shows the piano accompaniment for measures 55-57. Chord symbols 'Gsus', 'G', and 'C' are written above the right-hand staff. The piano accompaniment continues with a rhythmic pattern in the left hand.



58

(CHOIR)

I want to walk your streets that are gold - en,

F C Am G

61

unison

and I want to run where the an-gels have trod.

F Csus<sup>4</sup>/<sub>2</sub> C Gsus

64

Je - ru - sa - lem, I want to rest

C F

67

on the banks of your riv - er, in that cit - y,

C Am G F C

70

*unison*

cit - y of God.

G/F C C2 Csus

73

**5**  
**11**

*THE HOLY CITY (Weatherly/Adams)*

Je - ru - sa - lem,

C C2 C Bb Ab

76

— Je - ru - sa - lem, —

Absus                      Ab                      D $\flat$  / Ab                      G $\flat$  / F $\flat$

79

sing, for the night is o'er,

D $\flat$  / F                      Bbm7                      D $\flat$ m6 / F $\flat$                       A $\flat$  / E $\flat$

82

unison  
— ho - san - na in the

Em / D                      E $\flat$  / D $\flat$                       G $\flat$  / F $\flat$

85

high - est! Ho - san - na - for -

Cm Fm Bbm Ab

88

ev - er - for - ev - er - more!

unison unison

Ebm Dm7(4)

91

Je - ru - sa - lem,

G7sus Ab7sus Db

vella vella vella

93

I want to walk your streets that are

G $\flat$  D $\flat$

95

gold - en, and I want to run

B $\flat$ m A $\flat$  G $\flat$

97

*unison*  
where the an - gels have trod.

D $\flat$  sus $\frac{4}{2}$  D $\flat$  A $\flat$  sus

99

Je - ru - sa - lem, I want to rest

D $\flat$

G $\flat$

102

on the banks of your riv - er, in that cit - y,

D $\flat$

B $\flat$ m

A $\flat$

G $\flat$

D $\flat$   
G $\flat$

105

cit - y of God, Je - ru - sa - lem, cit - y of God,

G $\flat$   
A $\flat$

D $\flat$

G $\flat$   
D $\flat$

108

Je - ru - sa - lem, cit - y of God, Je - ru - sa - lem,

Db Gb Db Gb

111

cit - y of God.

cresc.

Gb Ab Db

113

ff

ff

Gb Ab Db