

Bb Trumpet

NATURAL MINOR SCALES

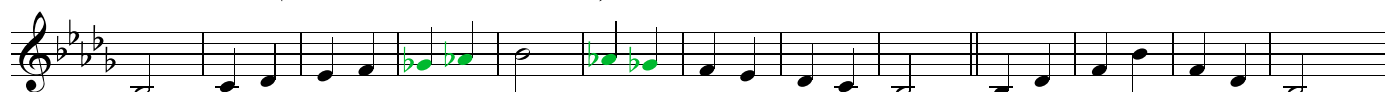
C Natural Minor Scale ("Bb" Concert Natural Minor)



F Natural Minor Scale ("Eb" Concert Natural Minor)



Bb Natural Minor Scale ("Ab" Concert Natural Minor)



Eb Natural Minor Scale ("Db" Concert Natural Minor)



Ab Natural Minor Scale ("Gb" Concert Natural Minor)



C#/Db Natural Minor Scale ("B" Concert Natural Minor)



F# Natural Minor Scale ("E" Concert Natural Minor)



B Natural Minor Scale ("A" Concert Natural Minor)



E Natural Minor Scale ("D" Concert Natural Minor)



A Natural Minor Scale ("G" Concert Natural Minor)



D Natural Minor Scale ("C" Concert Natural Minor)



G Natural Minor Scale ("F" Concert Natural Minor)



Bb Trumpet **HARMONIC MINOR SCALES**

C Harmonic Minor Scale ("Bb" Concert Harmonic Minor)



F Harmonic Minor Scale ("Eb" Concert Harmonic Minor)



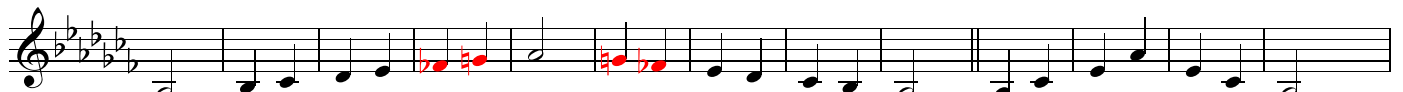
Bb Harmonic Minor Scale ("Ab" Concert Harmonic Minor)



Eb Harmonic Minor Scale ("Db" Concert Harmonic Minor)



Ab Harmonic Minor Scale ("Gb" Concert Harmonic Minor)



C#/Db Harmonic Minor Scale ("B" Concert Harmonic Minor)



F# Harmonic Minor Scale ("E" Concert Harmonic Minor)



B Harmonic Minor Scale ("A" Concert Harmonic Minor)



E Harmonic Minor Scale ("D" Concert Harmonic Minor)



A Harmonic Minor Scale ("G" Concert Harmonic Minor)



D Harmonic Minor Scale ("C" Concert Harmonic Minor)



G Harmonic Minor Scale ("F" Concert Harmonic Minor)



Bb Trumpet

MELODIC MINOR SCALES

C Melodic Minor Scale ("Bb" Concert Melodic Minor)

Musical notation for the C Melodic Minor Scale in B-flat major. The scale is written in treble clef with a key signature of two flats (B-flat and E-flat) and a 2/4 time signature. The notes are C, D, E, F, G, A-flat, B-flat, A, G, F, E, D, C. The ascending and descending forms are separated by a double bar line.

F Melodic Minor Scale ("Eb" Concert Melodic Minor)

Musical notation for the F Melodic Minor Scale in E-flat major. The scale is written in treble clef with a key signature of three flats (B-flat, E-flat, and A-flat) and a 2/4 time signature. The notes are F, G, A, B-flat, C, D-flat, E-flat, D, C, B-flat, A, G, F. The ascending and descending forms are separated by a double bar line.

Bb Melodic Minor Scale ("Ab" Concert Melodic Minor)

Musical notation for the B-flat Melodic Minor Scale in A-flat major. The scale is written in treble clef with a key signature of four flats (B-flat, E-flat, A-flat, and D-flat) and a 2/4 time signature. The notes are B-flat, C, D, E-flat, F, G-flat, A-flat, G, F, E-flat, D, C, B-flat. The ascending and descending forms are separated by a double bar line.

Eb Melodic Minor Scale ("Db" Concert Melodic Minor)

Musical notation for the E-flat Melodic Minor Scale in D-flat major. The scale is written in treble clef with a key signature of five flats (B-flat, E-flat, A-flat, D-flat, and G-flat) and a 2/4 time signature. The notes are E-flat, F, G, A-flat, B-flat, C-flat, D-flat, C, B-flat, A-flat, G, F, E-flat. The ascending and descending forms are separated by a double bar line.

Ab Melodic Minor Scale ("Gb" Concert Melodic Minor)

Musical notation for the A-flat Melodic Minor Scale in G-flat major. The scale is written in treble clef with a key signature of six flats (B-flat, E-flat, A-flat, D-flat, G-flat, and C-flat) and a 2/4 time signature. The notes are A-flat, B-flat, C, D-flat, E-flat, F-flat, G-flat, F, E-flat, D-flat, C, B-flat, A-flat. The ascending and descending forms are separated by a double bar line.

C#/Db Melodic Minor Scale ("B" Concert Melodic Minor)

Musical notation for the C#/D-flat Melodic Minor Scale in B major. The scale is written in treble clef with a key signature of two sharps (F-sharp and C-sharp) and a 2/4 time signature. The notes are C#, D, E, F, G, A, B, A, G, F, E, D, C#. The ascending and descending forms are separated by a double bar line.

F# Melodic Minor Scale ("E" Concert Melodic Minor)

Musical notation for the F-sharp Melodic Minor Scale in E major. The scale is written in treble clef with a key signature of one sharp (F-sharp) and a 2/4 time signature. The notes are F#, G, A, B, C, D, E, D, C, B, A, G, F#. The ascending and descending forms are separated by a double bar line.

B Melodic Minor Scale ("A" Concert Melodic Minor)

Musical notation for the B Melodic Minor Scale in A major. The scale is written in treble clef with a key signature of three sharps (F-sharp, C-sharp, and G-sharp) and a 2/4 time signature. The notes are B, C, D, E, F, G, A, G, F, E, D, C, B. The ascending and descending forms are separated by a double bar line.

E Melodic Minor Scale ("D" Concert Melodic Minor)

Musical notation for the E Melodic Minor Scale in D major. The scale is written in treble clef with a key signature of two sharps (F-sharp and C-sharp) and a 2/4 time signature. The notes are E, F, G, A, B, C, D, C, B, A, G, F, E. The ascending and descending forms are separated by a double bar line.

A Melodic Minor Scale ("G" Concert Melodic Minor)

Musical notation for the A Melodic Minor Scale in G major. The scale is written in treble clef with a key signature of one sharp (F-sharp) and a 2/4 time signature. The notes are A, B, C, D, E, F, G, F, E, D, C, B, A. The ascending and descending forms are separated by a double bar line.

D Melodic Minor Scale ("C" Concert Melodic Minor)

Musical notation for the D Melodic Minor Scale in C major. The scale is written in treble clef with a key signature of no sharps or flats and a 2/4 time signature. The notes are D, E, F, G, A, B, C, B, A, G, F, E, D. The ascending and descending forms are separated by a double bar line.

G Melodic Minor Scale ("F" Concert Melodic Minor)

Musical notation for the G Melodic Minor Scale in F major. The scale is written in treble clef with a key signature of one flat (B-flat) and a 2/4 time signature. The notes are G, A, B, C, D, E-flat, F, E, D, C, B, A, G. The ascending and descending forms are separated by a double bar line.