

Baritone T.C.

NATURAL MINOR SCALES

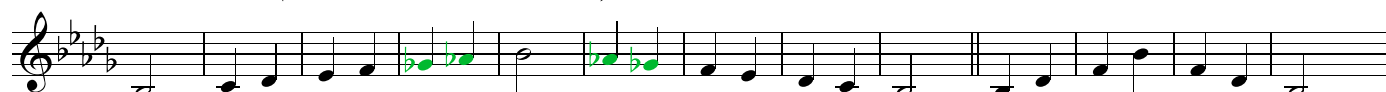
C Natural Minor Scale ("Bb" Concert Natural Minor)



F Natural Minor Scale ("Eb" Concert Natural Minor)



Bb Natural Minor Scale ("Ab" Concert Natural Minor)



Eb Natural Minor Scale ("Db" Concert Natural Minor)



Ab Natural Minor Scale ("Gb" Concert Natural Minor)



C#/Db Natural Minor Scale ("B" Concert Natural Minor)



F# Natural Minor Scale ("E" Concert Natural Minor)



B Natural Minor Scale ("A" Concert Natural Minor)



E Natural Minor Scale ("D" Concert Natural Minor)



A Natural Minor Scale ("G" Concert Natural Minor)



D Natural Minor Scale ("C" Concert Natural Minor)



G Natural Minor Scale ("F" Concert Natural Minor)



Baritone T.C. **HARMONIC MINOR SCALES**

C Harmonic Minor Scale ("Bb" Concert Harmonic Minor)



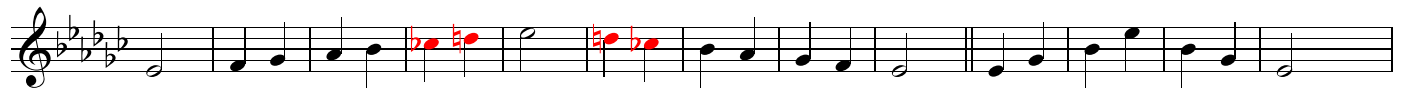
F Harmonic Minor Scale ("Eb" Concert Harmonic Minor)



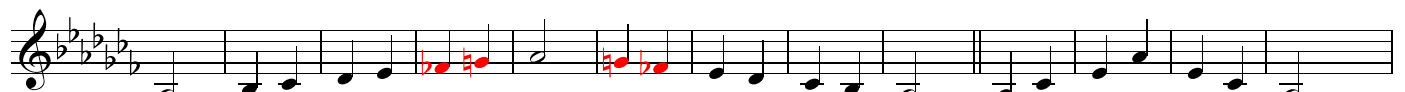
Bb Harmonic Minor Scale ("Ab" Concert Harmonic Minor)



Eb Harmonic Minor Scale ("Db" Concert Harmonic Minor)



Ab Harmonic Minor Scale ("Gb" Concert Harmonic Minor)



C#/Db Harmonic Minor Scale ("B" Concert Harmonic Minor)



F# Harmonic Minor Scale ("E" Concert Harmonic Minor)



B Harmonic Minor Scale ("A" Concert Harmonic Minor)



E Harmonic Minor Scale ("D" Concert Harmonic Minor)



A Harmonic Minor Scale ("G" Concert Harmonic Minor)



D Harmonic Minor Scale ("C" Concert Harmonic Minor)



G Harmonic Minor Scale ("F" Concert Harmonic Minor)



Baritone T.C. **MELODIC MINOR SCALES**

C Melodic Minor Scale ("Bb" Concert Melodic Minor)

Musical notation for the C Melodic Minor Scale (Bb Concert Melodic Minor) in 2/4 time. The scale is written on a treble clef staff with a key signature of two flats (Bb and Eb). The notes are: C, D, Eb, F, G, Ab, Bb, C. The scale is presented in two measures, with the first measure containing the ascending scale and the second measure containing the descending scale.

F Melodic Minor Scale ("Eb" Concert Melodic Minor)

Musical notation for the F Melodic Minor Scale (Eb Concert Melodic Minor) in 2/4 time. The scale is written on a treble clef staff with a key signature of three flats (Bb, Eb, and Ab). The notes are: F, G, Ab, Bb, C, Db, Eb, F. The scale is presented in two measures, with the first measure containing the ascending scale and the second measure containing the descending scale.

Bb Melodic Minor Scale ("Ab" Concert Melodic Minor)

Musical notation for the Bb Melodic Minor Scale (Ab Concert Melodic Minor) in 2/4 time. The scale is written on a treble clef staff with a key signature of four flats (Bb, Eb, Ab, and Db). The notes are: Bb, C, Db, Eb, F, G, Ab, Bb. The scale is presented in two measures, with the first measure containing the ascending scale and the second measure containing the descending scale.

Eb Melodic Minor Scale ("Db" Concert Melodic Minor)

Musical notation for the Eb Melodic Minor Scale (Db Concert Melodic Minor) in 2/4 time. The scale is written on a treble clef staff with a key signature of five flats (Bb, Eb, Ab, Db, and Gb). The notes are: Eb, F, G, Ab, Bb, C, Db, Eb. The scale is presented in two measures, with the first measure containing the ascending scale and the second measure containing the descending scale.

Ab Melodic Minor Scale ("Gb" Concert Melodic Minor)

Musical notation for the Ab Melodic Minor Scale (Gb Concert Melodic Minor) in 2/4 time. The scale is written on a treble clef staff with a key signature of six flats (Bb, Eb, Ab, Db, Gb, and Cb). The notes are: Ab, Bb, C, Db, Eb, F, G, Ab. The scale is presented in two measures, with the first measure containing the ascending scale and the second measure containing the descending scale.

C#/Db Melodic Minor Scale ("B" Concert Melodic Minor)

Musical notation for the C#/Db Melodic Minor Scale (B Concert Melodic Minor) in 2/4 time. The scale is written on a treble clef staff with a key signature of one sharp (F#) and one flat (Cb). The notes are: C#, D, Eb, F, G, Ab, B, C#. The scale is presented in two measures, with the first measure containing the ascending scale and the second measure containing the descending scale.

F# Melodic Minor Scale ("E" Concert Melodic Minor)

Musical notation for the F# Melodic Minor Scale (E Concert Melodic Minor) in 2/4 time. The scale is written on a treble clef staff with a key signature of two sharps (F# and C#). The notes are: F#, G, Ab, B, C, D, E, F#. The scale is presented in two measures, with the first measure containing the ascending scale and the second measure containing the descending scale.

B Melodic Minor Scale ("A" Concert Melodic Minor)

Musical notation for the B Melodic Minor Scale (A Concert Melodic Minor) in 2/4 time. The scale is written on a treble clef staff with a key signature of one sharp (F#). The notes are: B, C, D, Eb, F, G, Ab, B. The scale is presented in two measures, with the first measure containing the ascending scale and the second measure containing the descending scale.

E Melodic Minor Scale ("D" Concert Melodic Minor)

Musical notation for the E Melodic Minor Scale (D Concert Melodic Minor) in 2/4 time. The scale is written on a treble clef staff with a key signature of one sharp (F#). The notes are: E, F, G, Ab, B, C, D, E. The scale is presented in two measures, with the first measure containing the ascending scale and the second measure containing the descending scale.

A Melodic Minor Scale ("G" Concert Melodic Minor)

Musical notation for the A Melodic Minor Scale (G Concert Melodic Minor) in 2/4 time. The scale is written on a treble clef staff with a key signature of no sharps or flats. The notes are: A, B, C, D, Eb, F, G, A. The scale is presented in two measures, with the first measure containing the ascending scale and the second measure containing the descending scale.

D Melodic Minor Scale ("C" Concert Melodic Minor)

Musical notation for the D Melodic Minor Scale (C Concert Melodic Minor) in 2/4 time. The scale is written on a treble clef staff with a key signature of no sharps or flats. The notes are: D, E, F, G, Ab, B, C, D. The scale is presented in two measures, with the first measure containing the ascending scale and the second measure containing the descending scale.

G Melodic Minor Scale ("F" Concert Melodic Minor)

Musical notation for the G Melodic Minor Scale (F Concert Melodic Minor) in 2/4 time. The scale is written on a treble clef staff with a key signature of one flat (Bb). The notes are: G, A, B, C, D, Eb, F, G. The scale is presented in two measures, with the first measure containing the ascending scale and the second measure containing the descending scale.